

"Finding Old Sikyon": Illustrations

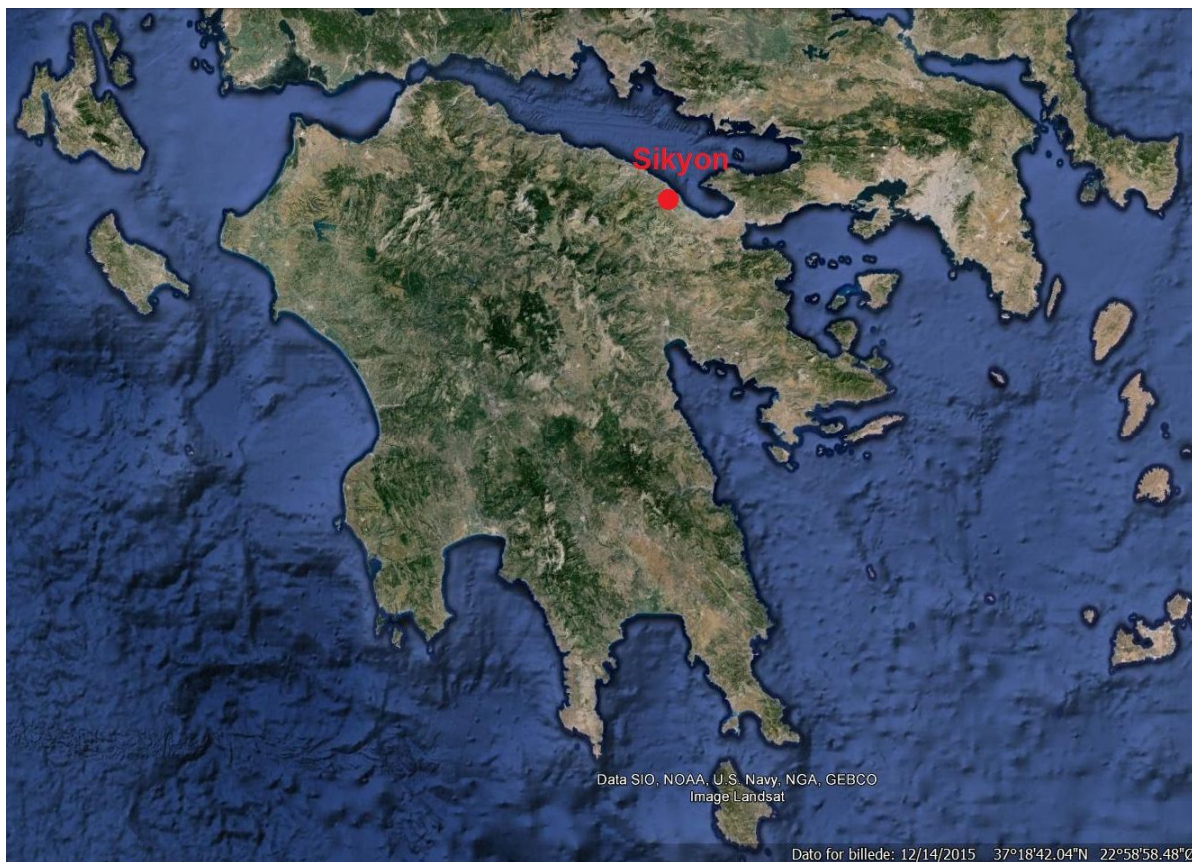


Fig. 1: Location of Sikyon on the north-eastern Peloponnese (Google Earth/S. Muth-Frederiksen)

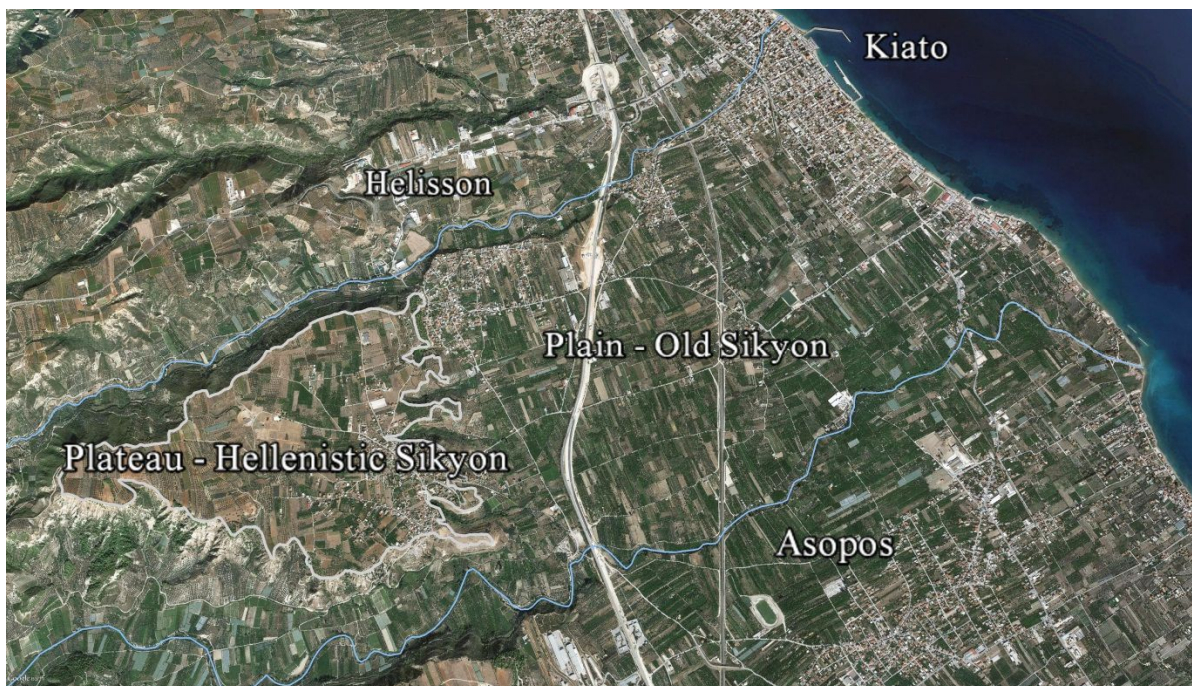


Fig. 2: Location of Old Sikyon in relation to Hellenistic Sikyon (Google Earth/G. Giannakopoulos)



Fig. 3: Panorama of the plain of Old Sikyon (K. Winther-Jacobsen)



Fig. 4: Side-by-side survey in summer 2015 (K. Winther-Jacobsen)



Fig. 5: The processing of survey finds in the depot (K. Winther-Jacobsen)

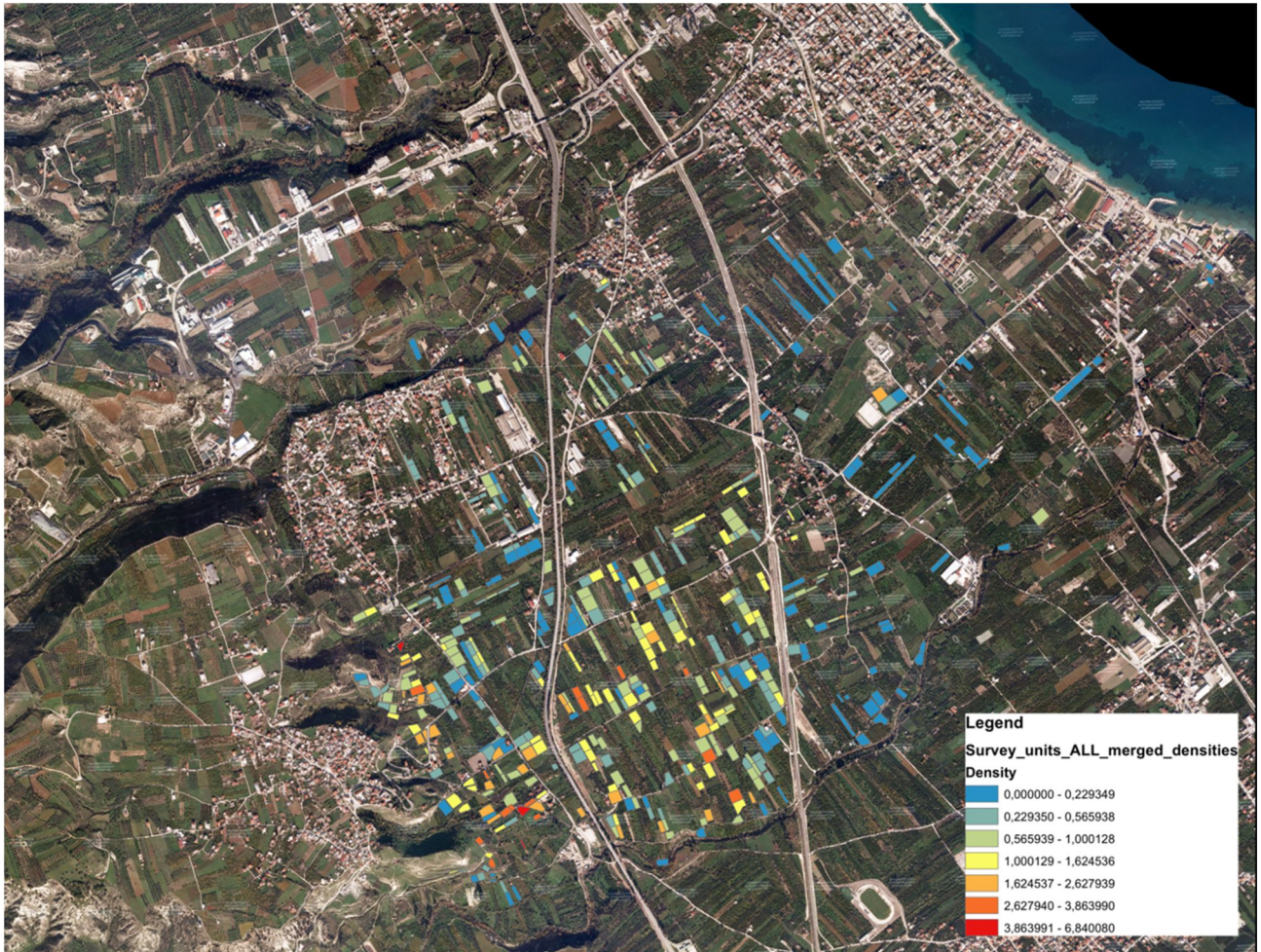


Fig. 6: Find distribution map after the summer campaign 2015 (K. Winther-Jacobsen/G. Giannakopoulos, based on Google Earth)



Fig. 7: Geomagnetic survey in summer 2015 (R. Frederiksen)



Fig. 8: Resistivity and seismic measurements in summer 2015: field transects (W. Rabbel)



Fig. 9: Resistivity and seismic measurements in summer 2015: data recording (R. Frederiksen)



Fig. 10: Radar measurements in summer 2015 (R. Frederiksen)



Fig. 11: Results of geophysical investigations 2015 (CAU Kiel, Institute of Geosciences/Eastern Atlas, Berlin, based on Google Earth)



Fig. 12: Augering in April 2016 (N. Walther)



Fig. 13: Parallel augering and resistivity survey in April 2016 (W. de Neef)



Fig. 14: Resistivity survey in April 2016: data recording (N. Walther)

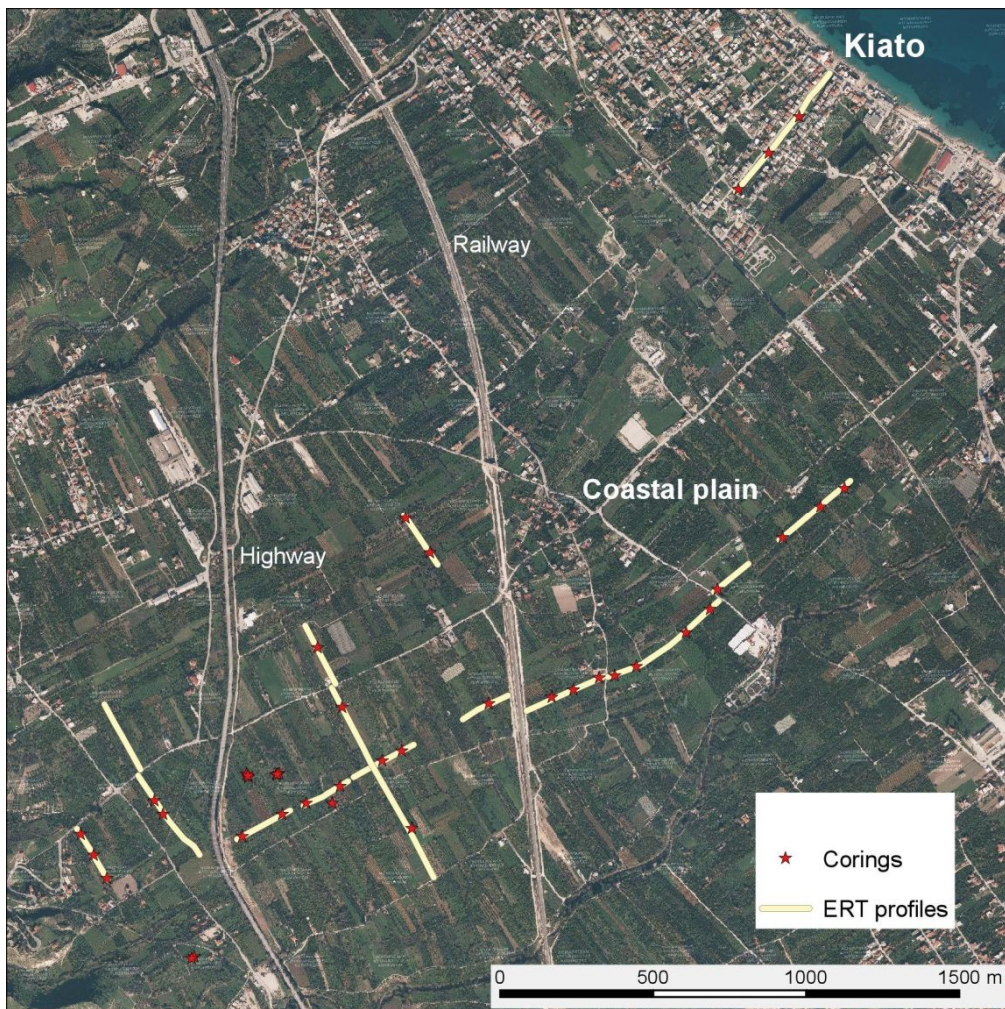


Fig. 15: Map of augerings and resistivity transects in April 2016 (B. Ullrich/W. de Neef, based on Google Earth)



Fig. 16: Core from the augerings in April 2016 (W. de Neef)



Fig. 17: Field survey in the north-western area of Old Sikyon (S. Müth-Frederiksen)

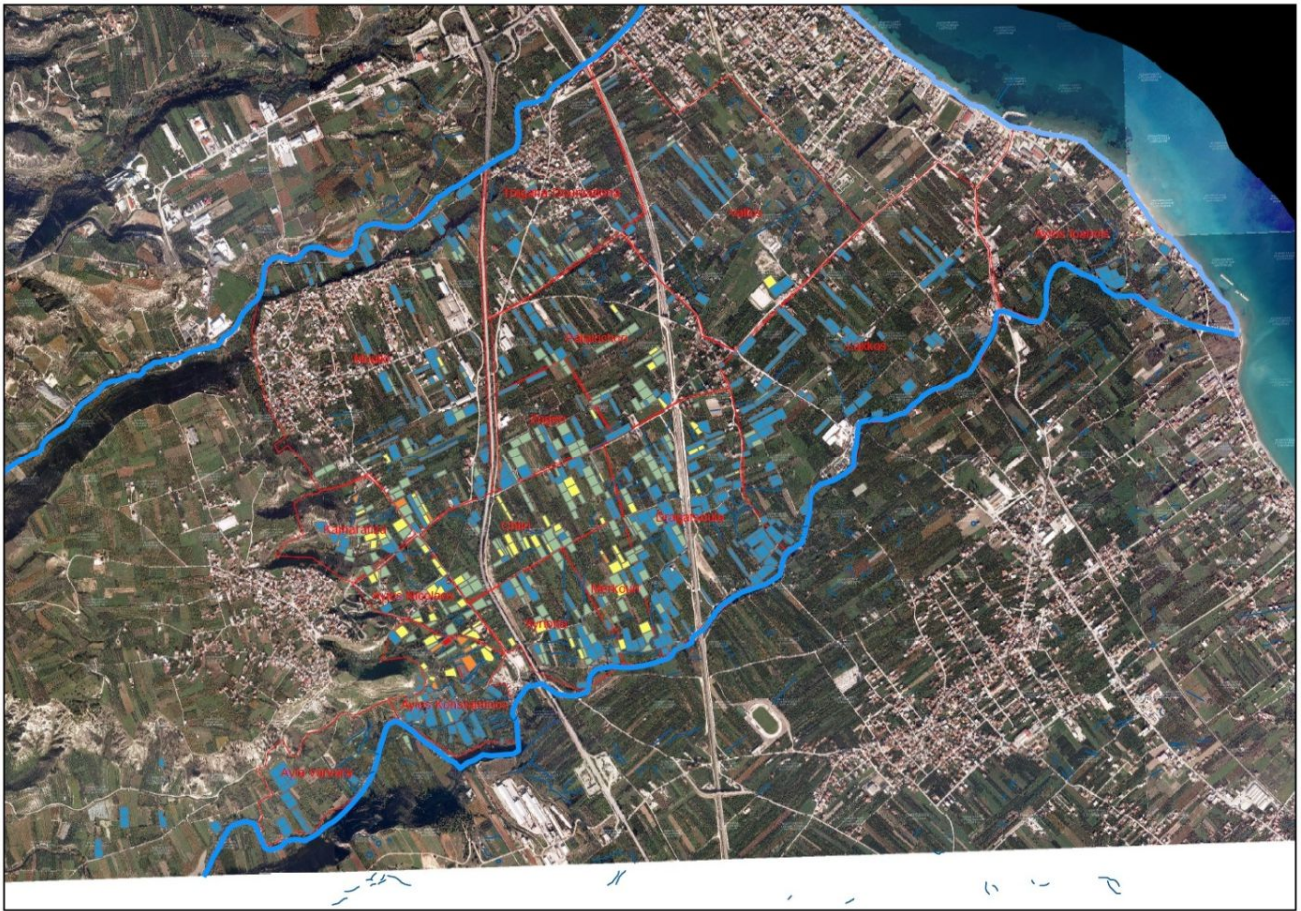


Fig. 18: Survey density map after the summer campaign 2016 (K. Winther-Jacobsen/G. Giannakopoulos, based on Google Earth)



Fig. 19: Magnetometry by Eastern Atlas in summer 2016 (S. Müth-Frederiksen)



Fig. 20: Resistivity, seismic and radar measurements by the team of the University of Kiel (S. Müth-Frederiksen)



Fig. 21: Results of the geomagnetic survey in Sikyon in 2015 and 2016 (CAU Kiel, Institute of Geosciences/Eastern Atlas, Berlin, based on Google Earth)



Fig. 22: Doric triglyphon within a pile of ancient blocks south of the plateau (S. MÜth-Frederiksen)

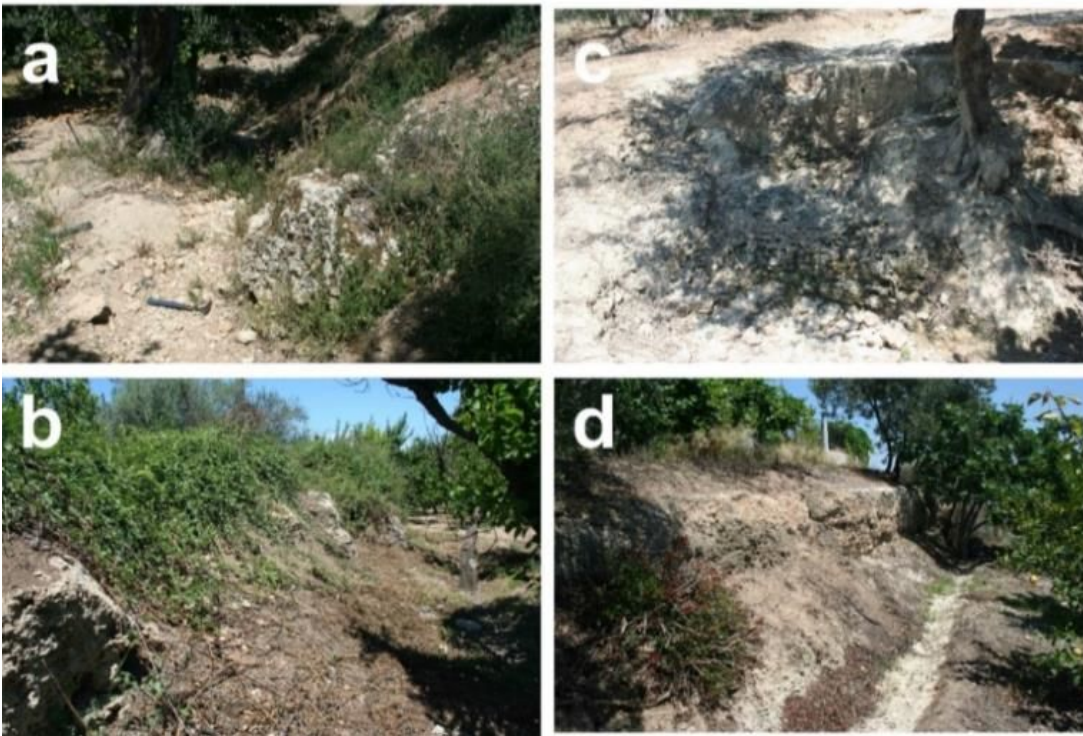


Fig. 23: Quarries of bio-oosparrite cut into a lobe of land south of Palaiochori (C. Hayward)



Fig. 24: Geomagnetic survey and data processing in the north-eastern area of the town (S. MÜth-Frederiksen)

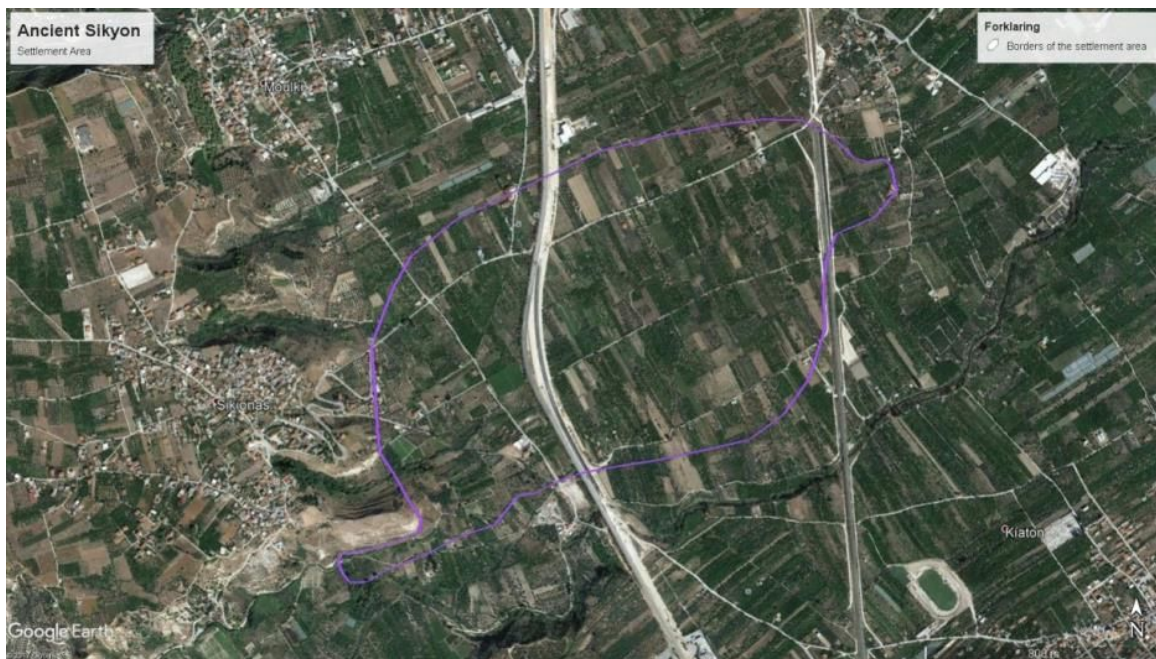


Fig. 25: Settlement area of Ancient Sikyon (S. Muth-Frederiksen, based on Google Earth)

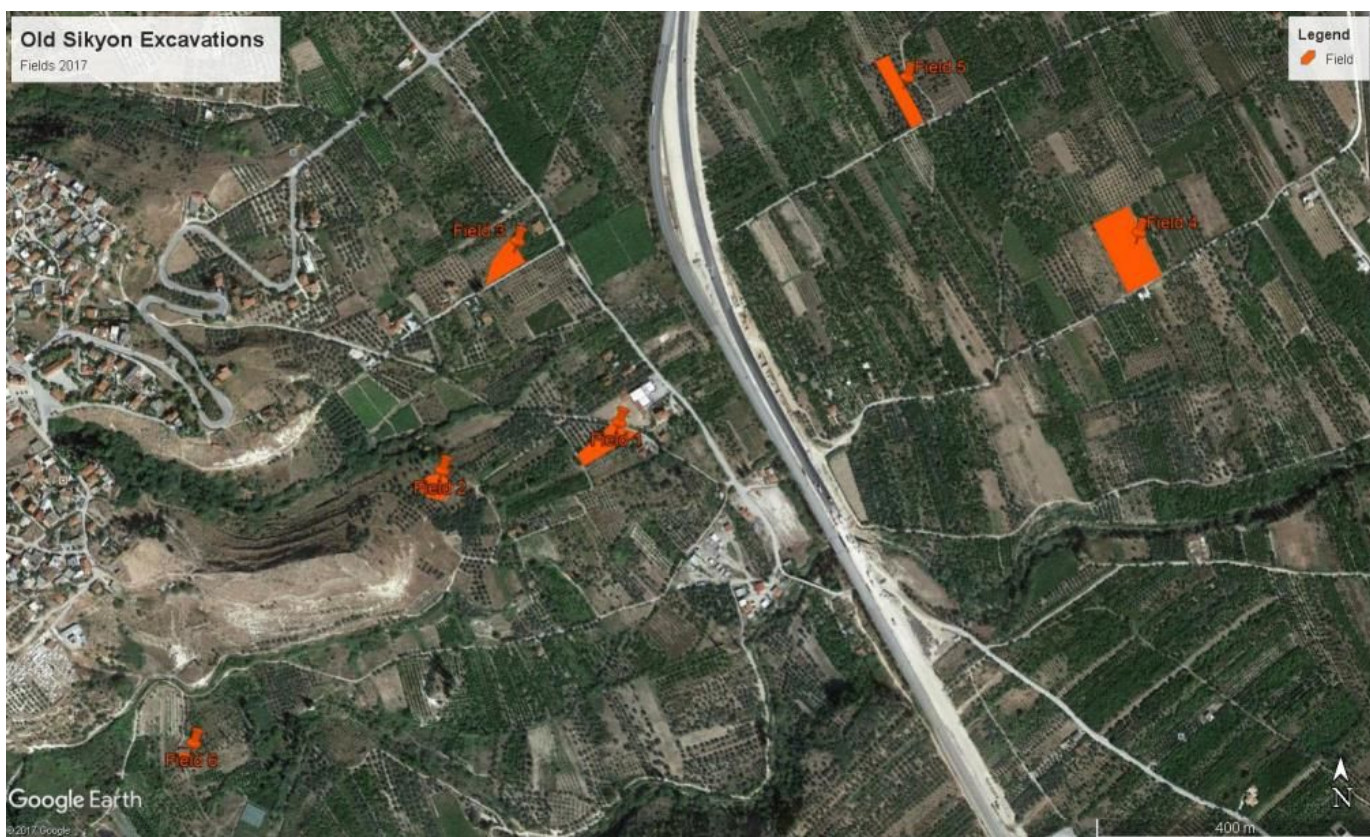


Fig. 26: Fields where excavations and the study of architectural blocks were carried out in 2017 (S. Muth-Frederiksen, based on Google Earth)



Fig. 27: Excavations in Fields 1-5 (S. Müth-Frederiken/F. Vingaard Rasmussen)



Fig. 28: Removal of blocks and lapidarium at Agia Varvara (Field 6) (T. Roland Jensen)



Fig. 29: Find processing and flotation at the depot (S. Mùth-Frederiksen)



Fig. 30: Participants in the summer season 2018 of the Old Sikyon project (S. MÜth)

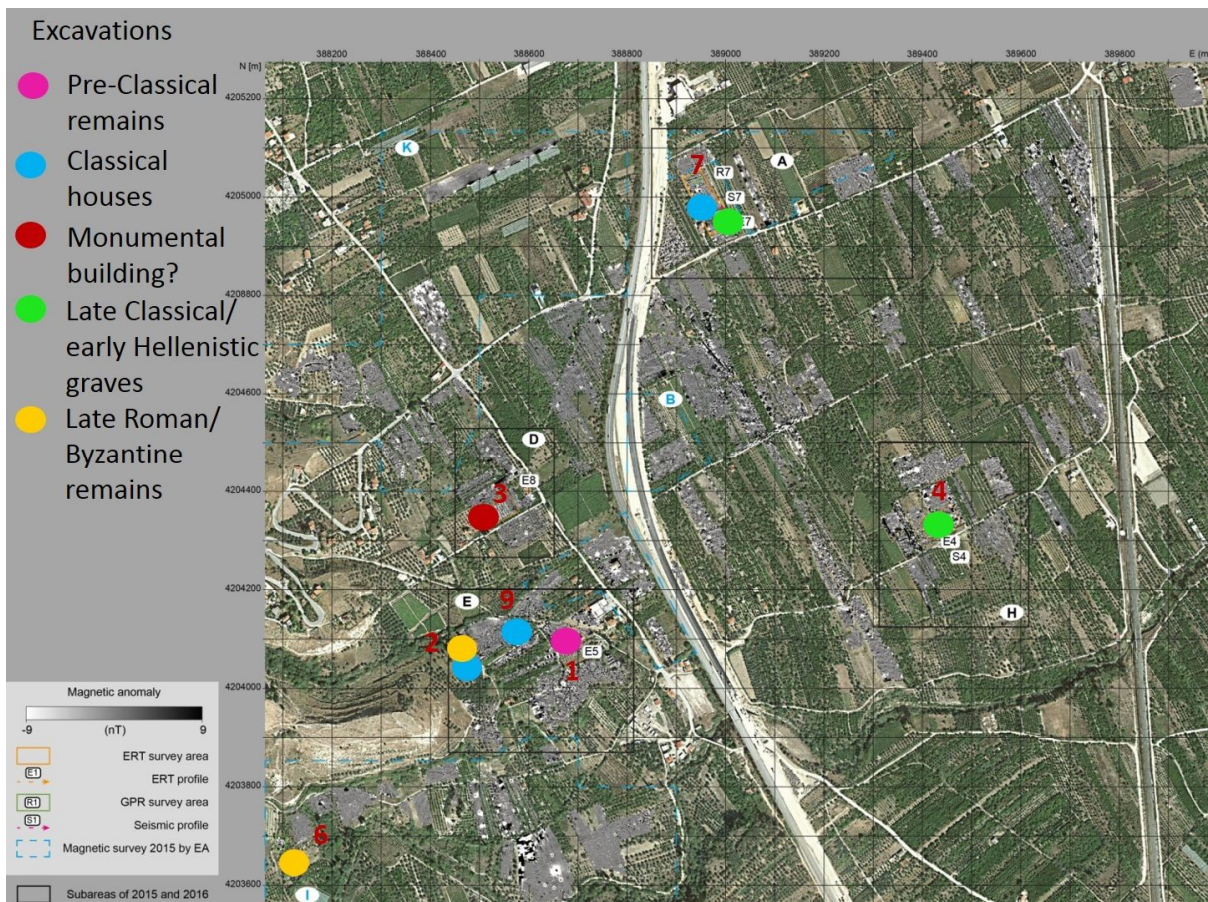


Fig. 31: Structures found in the excavations 2017-2018 on the background of the geomagnetic map (S. MÜth, Institute of Geosciences/CAU Kiel, on the basis of Google Earth)

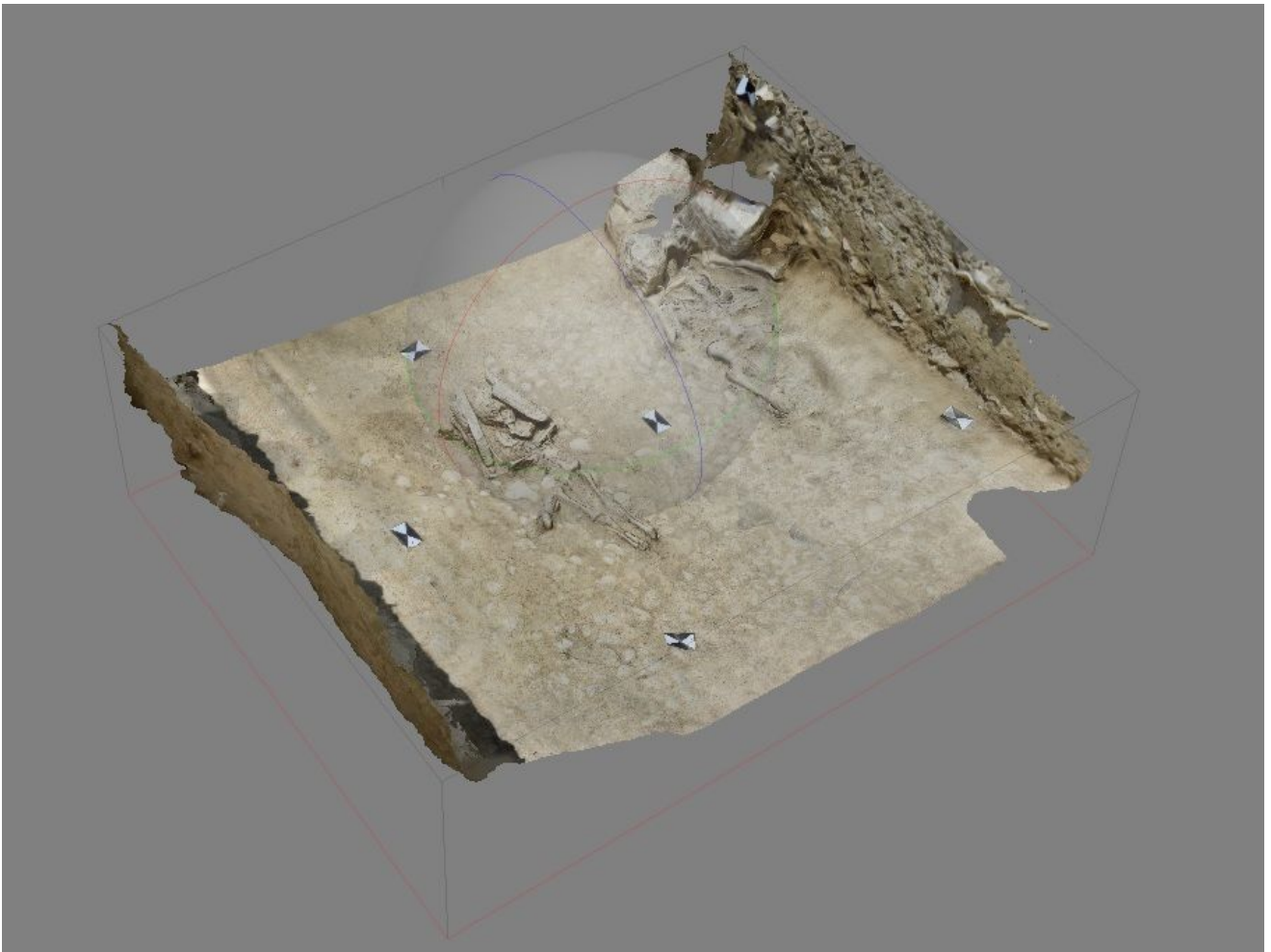


Fig. 32: 3D documentation of Byzantine graves in Trench 6A (T. Hansen)



Fig. 33: Excavations fields of the 2018 season (S. Müth on the basis of Google Earth)



Fig. 34: Recovery of a complete hydria by the conservator A. Kandri and two workers (S. MÜth)

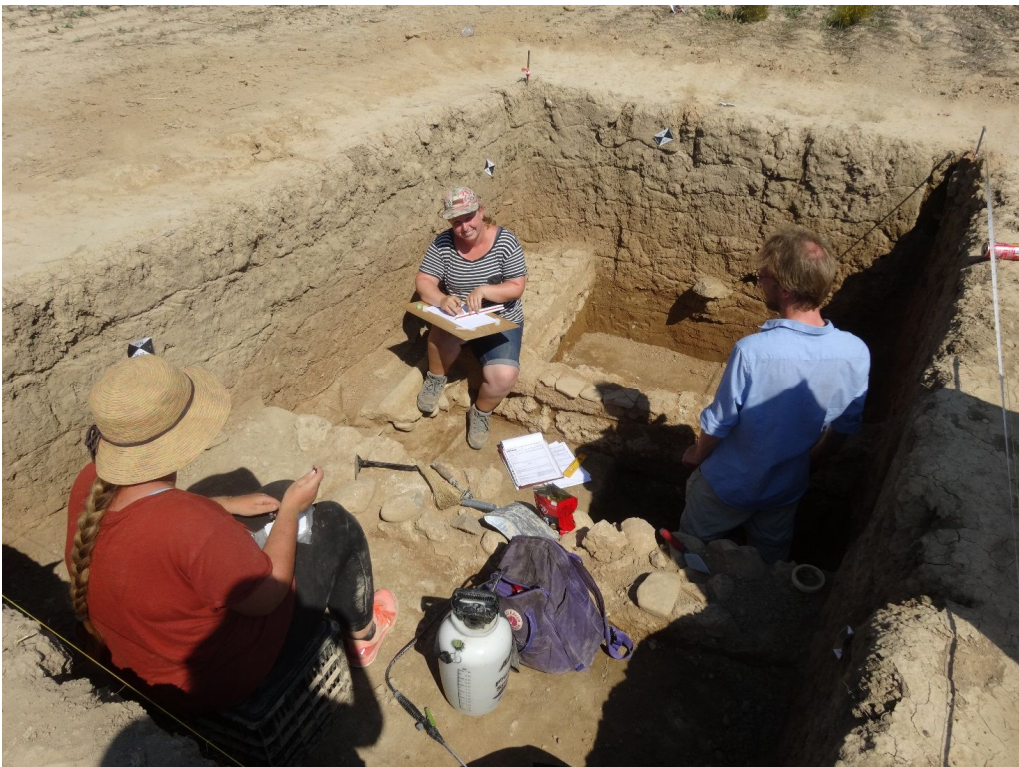


Fig. 35: Excavation and drawing of Classical building remains in Trench 7A (S. MÜth)



Fig. 36: Washing of pottery and drawing at the depot (S. Müth)



Fig. 37: Group picture of the participants of the 2019 summer season (The Old Sikyon Project).

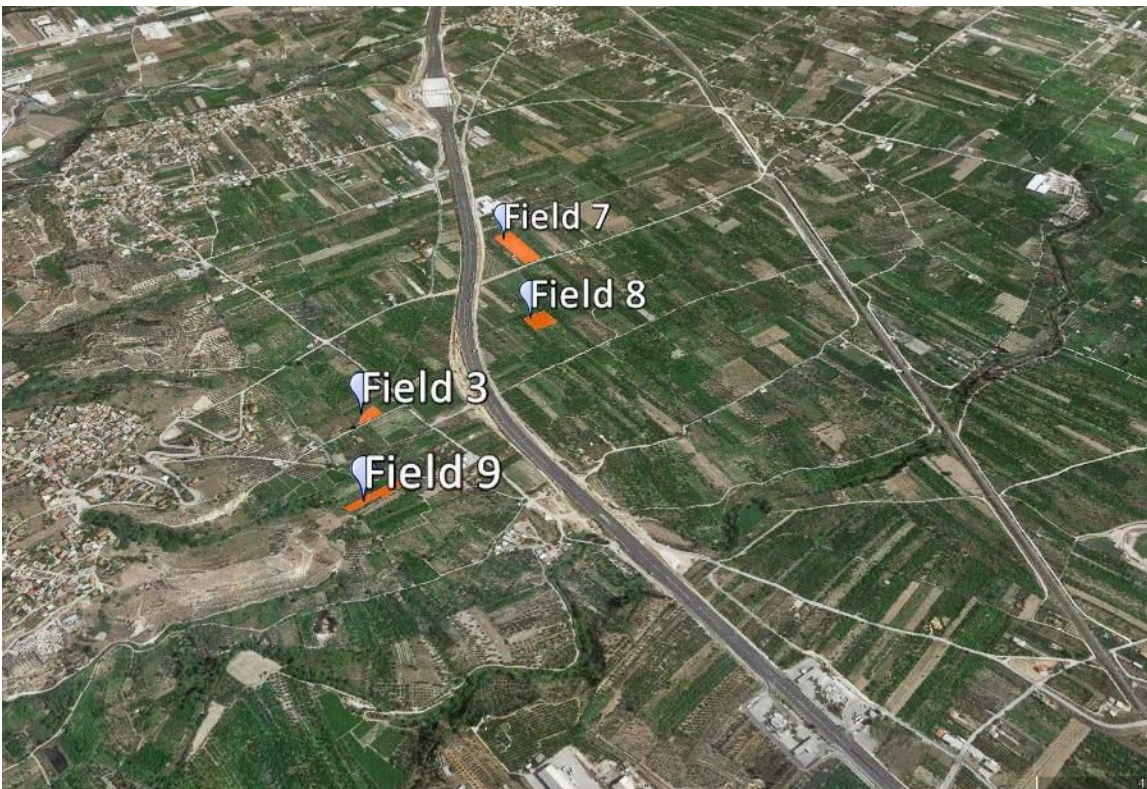


Fig. 38: Fields with excavation trenches in the summer season of 2019 (on the basis of Google Earth).



Fig. 39: Drone picture of Trench 3A from southeast with the 'Heroon' and its surroundings (The Old Sikyon Project).



Fig. 40: Grave from the 5th c. BC next to the 'Heroon' in Trench 3A, with remains of the shoes of the deceased (The Old Sikyon Project).



Fig. 41: The grave monument from the late Classical or early Hellenistic period in Trench 7C (The Old Sikyon Project).



Fig. 42: Remains of a grave ritual in Trench 7C with burned figurines and pottery (The Old Sikyon Project).



Fig. 43: Drone picture of Trench 7B with Classical building remains (The Old Sikyon Project).



Fig. 44: Part of a monumental building from the late Classical period in Trench 8A (The Old Sikyon Project).



Fig. 45: Removal of the large Byzantine pithos from Trench 8A (The Old Sikyon Project).



Fig. 46: Drone picture of Trench 9A with domestic structures (The Old Sikyon Project).



Fig. 47: Drone picture of Trench 9B from northeast with Archaic to Hellenistic structures (The Old Sikyon Project).